

} |

|

|

|

|

|

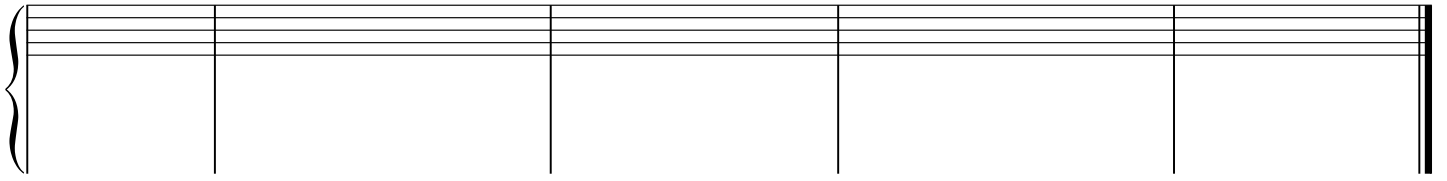
|

|

} |

} |

2. Set this bass line. The asterisks (*) indicate to use a ii7, IV7, or their inversions.



5

7 6
5

4 3 6 4 5 3 7 7 4 2 6 5

A musical staff with a brace on the left and a double bar line on the right, containing ten vertical bar lines representing a sequence of ten notes. Fingerings are indicated by numbers 2-5 below the notes.